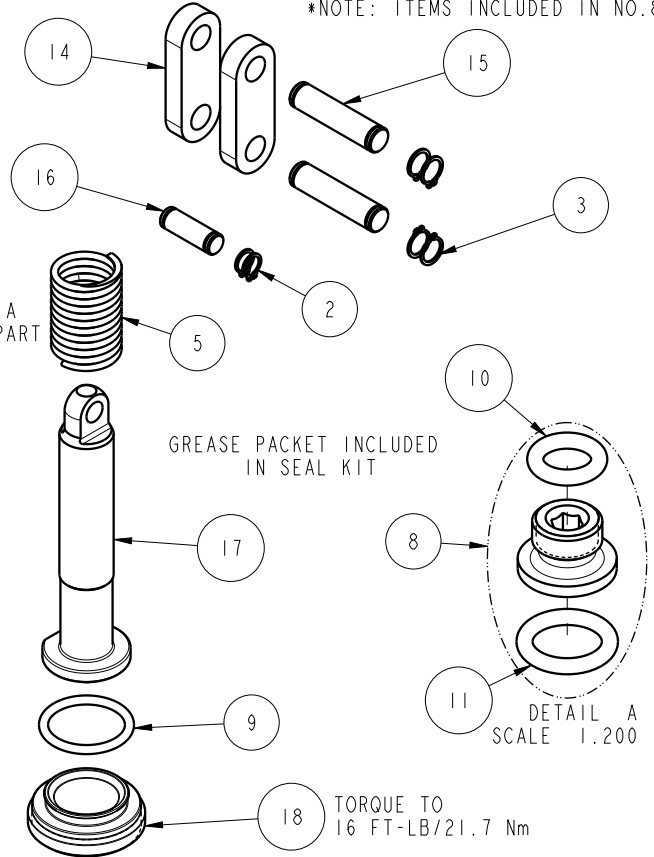
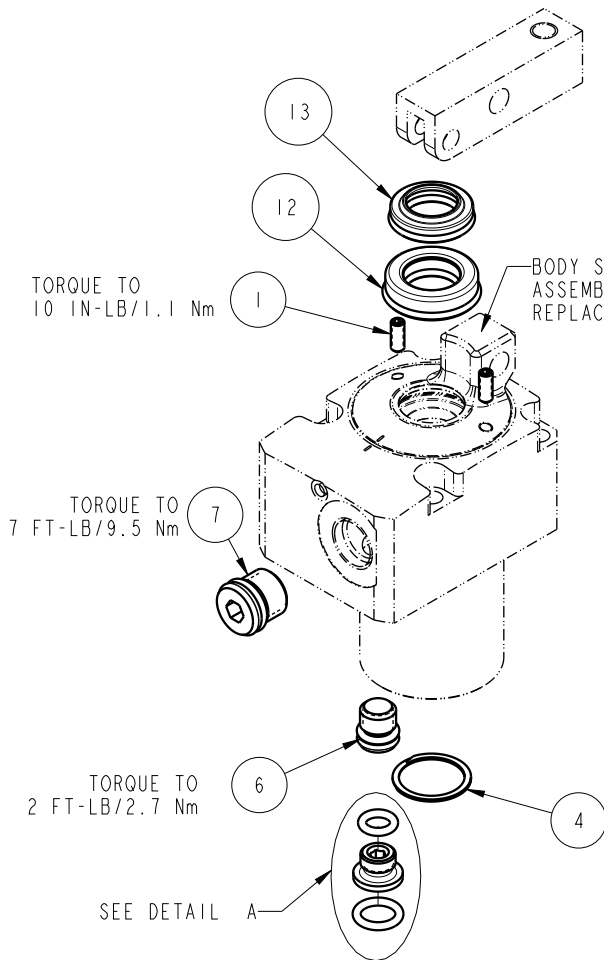


| NO  | QTY | PART NO  | DESCRIPTION                            | STD SEAL KIT |
|-----|-----|----------|--|--------------|
| 1   | 2   | 21500316 | SCREW, SET, CUP PT, M3 X .5 X 8        |              |
| 2   | 2   | 23050031 | RING, RTNG, EXT, 0.197                 | X            |
| 3   | 4   | 23050032 | RING, RTNG, EXT, 0.236                 | X            |
| 4   | 1   | 23050052 | RETAINING RING, SPIRAL, INTL           | X            |
| 5   | 1   | 23350128 | SPRING, COMPRESSION                    |              |
| 6   | 1   | 30601122 | PLUG, SOCH, SAE 2                      |              |
| 7   | 1   | 30601144 | PLUG, SOCH, SAE 4                      |              |
| 8   | 1   | 30871120 | ASSY, ADAPTER, SC, TF, MM              | X            |
| 9   | 1   | 39000064 | O-RING, (17mm x 2)                     | X            |
| 10  | 1   | 39050036 | O-RING, (-009)                         | X*           |
| 11  | 1   | 39050042 | O-RING, (-011)                         | X*           |
| 12  | 1   | 39052064 | SEAL, ROD, RSB, 12, 85A, AU            | X            |
| 13  | 1   | 39053040 | SEAL, WIPER, SNAP IN, WED, 12, 94A, AU | X            |
| 14  | 2   | 81600145 | LINK, LC, 7MP $\alpha$ , 25B           |              |
| 15  | 2   | 81600150 | PIN, LINK, LC, 7MP $\alpha$ , 25B      |              |
| 16  | 1   | 81600155 | PIN, PLUNGER, LC, 7MP $\alpha$ , 25B   |              |
| 17  | 1   | 81600260 | PLUNGER, LC, TL360, SA, 600/2.73kN     |              |
| 18  | 1   | 81600270 | CAP, LC, TL360, 600/2.73kN             |              |
| N/A | N/A | 60160100 | KIT, SEAL, ASSY, LC, TL360, SA, 6001b  | NOTED        |

\*NOTE: ITEMS INCLUDED IN NO. 8



### PARTS LIST



VEKTEK, INC.  
1334 E. SIXTH AVE. P.O. BOX 625  
EMPORIA, KS. 66801 U.S.A.

ASSEMBLIES AFFECTED  
16-3112-00

PARTS LIST, ASSY, LC, TL360, SA, 6001b

ROTARY LUG

SIZE  
A PL1614

REV  
C

|         |                        |  |            |          |
|---------|------------------------|--|------------|----------|
| C       | 5201                   | RELEASE                                      | ALS        | 11/10/23 |
| REV     | IN ACCORDANCE WITH ECN | EFFECTIVE DATE                               | REVISED BY | DATE     |
| DRW BY: | BCD                    | <b>DRAWING STATUS: Released</b>              |            |          |
| DATE:   | 7/20/16                | PRODUCTION APPROVED FOR RELEASED STATUS ONLY |            |          |

FORM FEG035\_PL\_ASIZE, REV. B

SHEET 1 OF 1